

Upgrades to KCI ActiV.A.C.

(carrying case, docking station, capacitive screen upgrade)

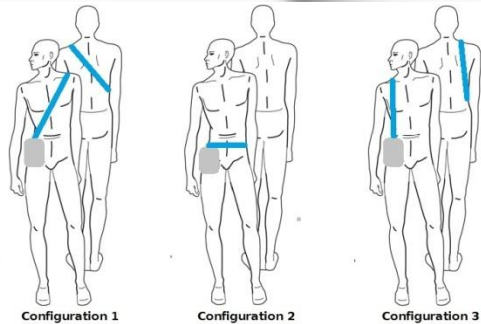
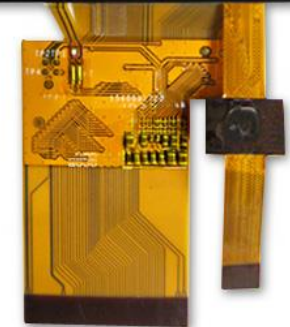
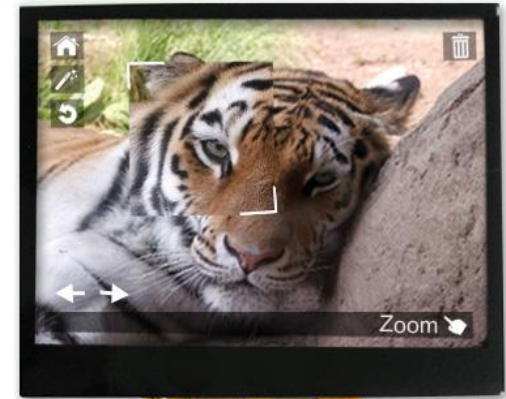
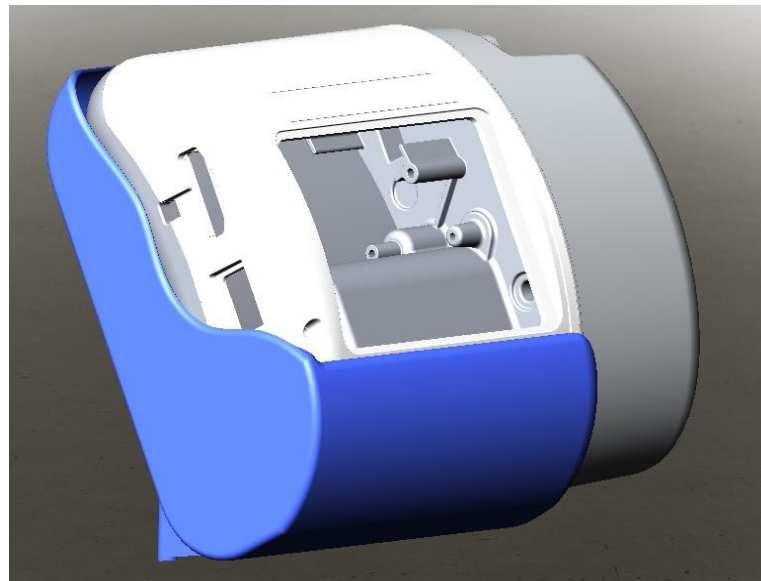
A. Goals: To increase the durability, and market lifetime of the device.

B. Brief Description: The carrying case is a flexible, TPE skin designed to protect the device. The docking station holds the device in its proper operating orientation, and prevents damage while the patient is immobile. The capacitive screen upgrade will not be fully implemented, but instead will model the signal processing required between the two touch panels.

C. Heights of Achievements this semester (using bullets):

- This project was completed this semester as part of a senior design course.
- The final project will be presented on April 30th.

Upgrades to the KCI ActiV.A.C.



Configuration 1

Configuration 2

Configuration 3